

SLG Support Staff

Perry Jacobs
Executive Vice President
perry@sharedlogic.com

Angie Fredericksen
Software Support Technician
Network Engineer
angie@sharedlogic.com

Fran Geoffrion
Software Support Technician
fran@sharedlogic.com

Melissa Koebel
Software Support Technician
melissa@sharedlogic.com

Kelly Magginis
Software Support Technician
kelly@sharedlogic.com

The Shared Logic Group

6904 Spring Valley Drive
Suite 305,
Holland OH 43528

Ph: 419-865-0083

Fax: 419-865-0964

www.sharedlogic.com

email: info@sharedlogic.com

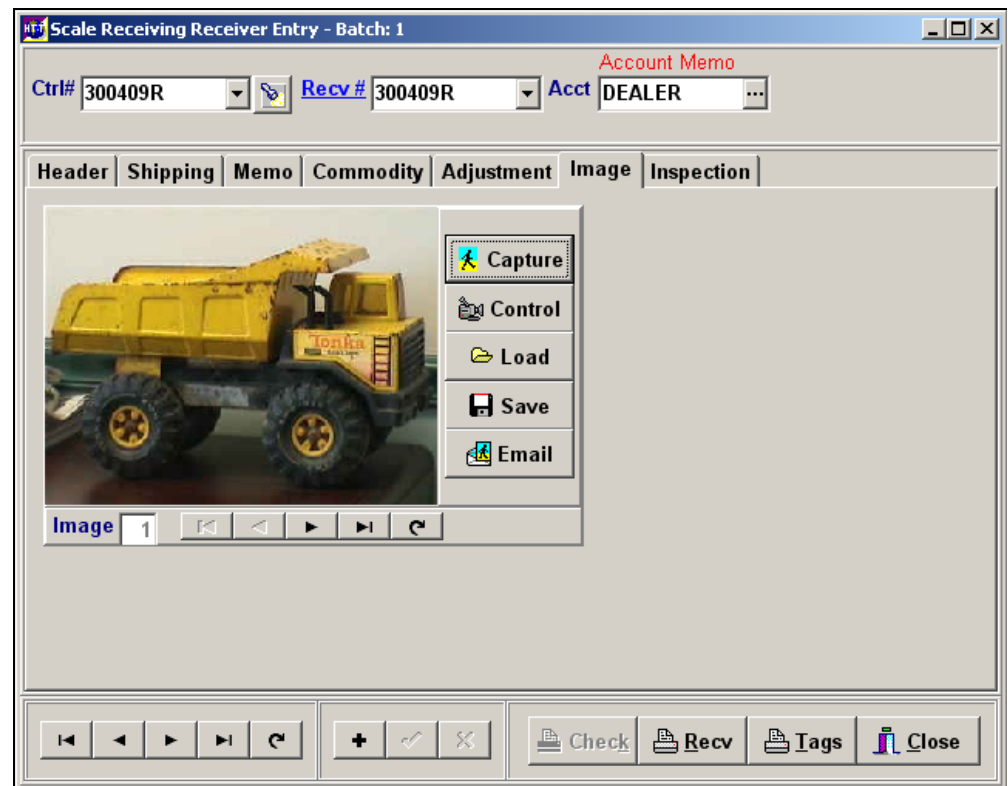
RIMAS NT/P Feature Spotlight...

Images in Scale Receiving

Three new functions have recently been made available in the Material Shipping and Receiving Entry, Scale Receiving Entry, Purchase and Sale History View History Detail programs: the ability to load, save, and email digital images.

Previously the Image Tab was only available to those using the surveillance camera system. While the surveillance camera functionality of capturing images has not changed, all users are now able to load existing images into the Entry program, save images on a hard drive, and email images from within each module by using the new buttons found on the Image Tab.

The Capture and image Control features are still only available to those using the surveillance camera system.



Spotlight cont...

To load an existing digital image, click the *Load* button and browse for the location of the image. Once located, double-click on the image file to load it. The image will appear in sequence in the preview pane.

To save an image once loaded, click the *Save* button and browse to the intended location. Type in the name of the file and click *Save*. The image will be stored at the indicated location.

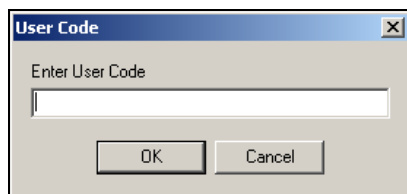
The image can be emailed by clicking the *Email* button when the image is visible on the Image Tab. Microsoft Outlook must be installed on the computer. The image will attach to an email message.

If you have any questions regarding the use of these features or to request more information about the surveillance camera system contact your Shared Logic technician.

Did You Know: Automatic Login

It is possible to setup RIMAS to login automatically when launched, rather than requiring re-entry of the User Code, Company Code, Division Code, and any applicable passwords each time a new session is started.

To setup an automatic login, press the Alt key plus the F12 button when on the RIMAS login screen. A prompt will appear asking for the User Code to use when logging in. See the example below. Second and third prompts asking for the Company and Division codes will also appear. If passwords are required, additional prompts will appear so they may be typed in.



When all of the prompts have been filled in, the Confirm screen appears. This screen will then appear each time RIMAS is launched. When the user clicks 'Yes' the system will login using the codes entered during the automatic login setup process.

Click any of the ads below to visit Shared Logic's product websites.

