

## SLG Support Staff

*Perry Jacobs*  
Executive Vice President  
[perry@sharedlogic.com](mailto:perry@sharedlogic.com)

*Angie Fredericksen*  
Software Support Technician  
Network Engineer  
[angie@sharedlogic.com](mailto:angie@sharedlogic.com)

*Fran Geoffrion*  
Software Support Technician  
[fran@sharedlogic.com](mailto:fran@sharedlogic.com)

*Melissa Koebel*  
Software Support Technician  
[melissa@sharedlogic.com](mailto:melissa@sharedlogic.com)

*Kelly Magginis*  
Software Support Technician  
[kelly@sharedlogic.com](mailto:kelly@sharedlogic.com)

## The Shared Logic Group

6904 Spring Valley Drive  
Suite 305,  
Holland OH 43528

Ph: 419-865-0083

Fax: 419-865-0964

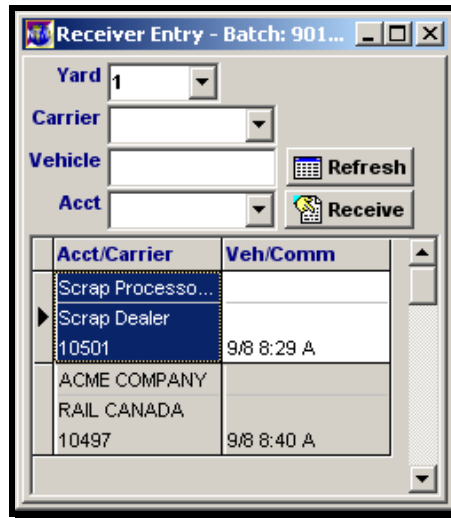
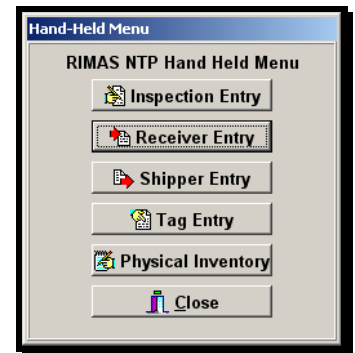
[www.sharedlogic.com](http://www.sharedlogic.com)

email: [info@sharedlogic.com](mailto:info@sharedlogic.com)

## RIMAS NT/P Feature Spotlight...

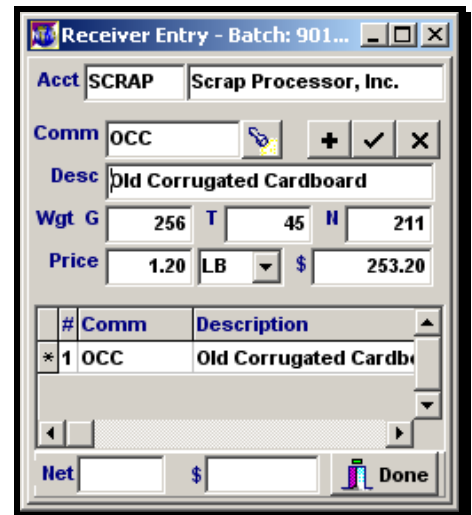
### Hand-Held Receiver and Shipper Entry Programs

Several of the RIMAS NT/P Entry programs have been formatted to run on a 240 x 320 resolution hand-held device and are available in a separate module within RIMAS NT/P. The hand-held device must be connected to the server using WiFi and a Remote Desktop connection to run RIMAS. This newsletter will address the Hand-Held Receiver and Shipper Entry programs.



The Hand-Held Receiver Entry program can be used to add detail to a Receiver. A Receiver is created for the Account from which you are purchasing the material and the Gross Weight is entered. The truck then pulls into the yard for sorting and the hand-held operator retrieves a record for the Receiver with the initial data entered.

When an active Receiver is selected from the grid on the main screen, the hand-held operator can enter additional commodity and weight information while standing in the yard using the keyboard provided by the hand-held device.



Once a Receiver is completed in the yard, the scale operator can pull up the record for payment using any Scale Receiving Entry program.

The Hand-Held Inspection Entry program can also be used to process a Receiver. The biggest difference is that the data entered is saved on the Inspection tab instead of directly entering Commodity data.

The Hand-Held Shipper Entry program can be used to add Tags/Commodities to a Shipper being loaded onto a vehicle in the yard. A Shipper must first be created in the Material Shipping Shipper Entry program for the Account and Contract to which you are shipping the material. Then the hand held device Operator can access the record in the yard by typing in the Control Number.

When the Shipper is selected it is displayed and the hand-held user can enter Tag/Commodity data.

#	Tag	Commodity	Gross
1	20001	AC-B	15,00
2	20002	AC-B	6,00
3		AC-B	21,00

When a Shipper is completed it can be accessed in the Material Shipping Entry program and completed by printing the Shipper and/or Bill of Lading Forms.

Access to the Hand-Held module and its five programs requires a separate license from Shared Logic but does not take up a concurrent licensed RIMAS user. Contact your Shared Logic technician or Larry Smith today to inquire about licensing the Hand-Held module.

Click any of the ads below to visit Shared Logic's product websites.

## New Search Feature

The Flashlight button found in the RIMAS NT/P Entry programs opens the Lookup screen. The Lookup feature allows the user to search for records within any of the columns on the screen, by clicking on the Column header. The selected column then becomes the value by which to filter and the means by which the records in the grid are sorted. As values are typed into the filter field, the grid drills-down to display records matching the typed criteria. The search is case-sensitive.

Control	Shipper	Account	Name	ShipDate	Type	Yard
202169	202169	AC0001	ACME COMPANY		LA	1
202218	202218	AC0001	ACME COMPANY	Sep 23 2005	LA	
202233	202233	AC0001	ACME COMPANY	Nov 22 2005	LA	1
202263	202263	AKSTEEL	AK STEEL CORPORATION		LA	
202324	202324	2340Q	BLUE DIAMOND	Aug 25 2006	SHP	
202328	202328	SLG	SLG	Aug 25 2006	INV	
202419	202419	SCRAP	Scrap Processor, Inc.	Aug 28 2006	SHP	