

SLG Support Staff

Perry Jacobs
Executive Vice President
perry@sharedlogic.com

Monte Porter
Sales Manager
monte@sharedlogic.com

Fran Geoffrion
Software Support Technician
fran@sharedlogic.com

Melissa Koebel
Software Support Technician
melissa@sharedlogic.com

Kelly Magginis
Software Support Technician
kelly@sharedlogic.com

The Shared Logic Group

6904 Spring Valley Drive
Suite 305,
Holland OH 43528

Ph: 419-865-0083

Fax: 419-865-0964

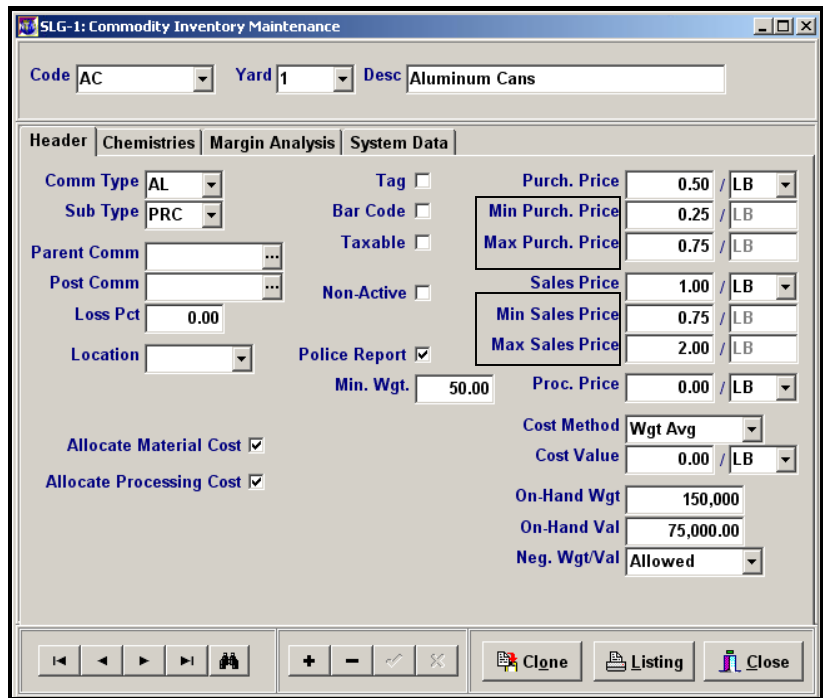
www.sharedlogic.com

email: info@sharedlogic.com

RIMAS NT/P Feature Spotlight...

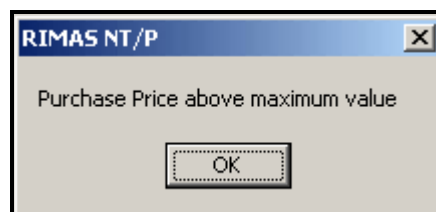
C/I Maintenance – Minimum and Maximum Prices

The Commodity Inventory Maintenance program contains two sets of Minimum and Maximum prices, one for purchasing the commodity and one for sales. The Minimum and Maximum purchase prices represent the smallest and largest dollar amounts, per the unit-of-measure, allowed to be entered when purchasing the commodity within the receiving modules or on Purchase Contracts. Similarly, the Minimum and Maximum Sales Prices indicate the smallest and largest amounts per unit-of-measure allowed to be charged as the sale price for the commodity.



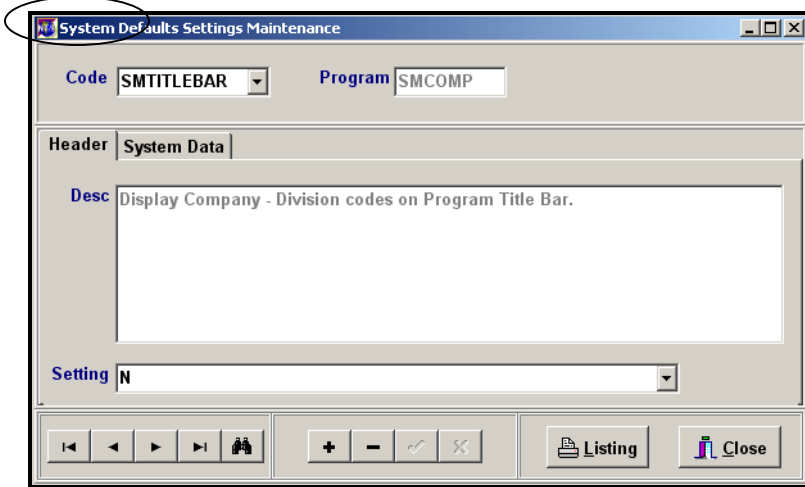
Entering Minimum and Maximum Purchase and Sale prices prevents inventory from being mistakenly sold for less than it is valued or purchased at a higher price than is competitive, due to clerical error or operator misconception. Regulating the purchase and sale prices for each commodity ensures that your company only receives or parts with inventory within the range of desired prices.

Should an employee attempt to receive or sell a commodity outside the Maximum or Minimum Price allowances they will receive a similar message to below, and be unable to save their transaction until the price is modified to fall within the acceptable range.

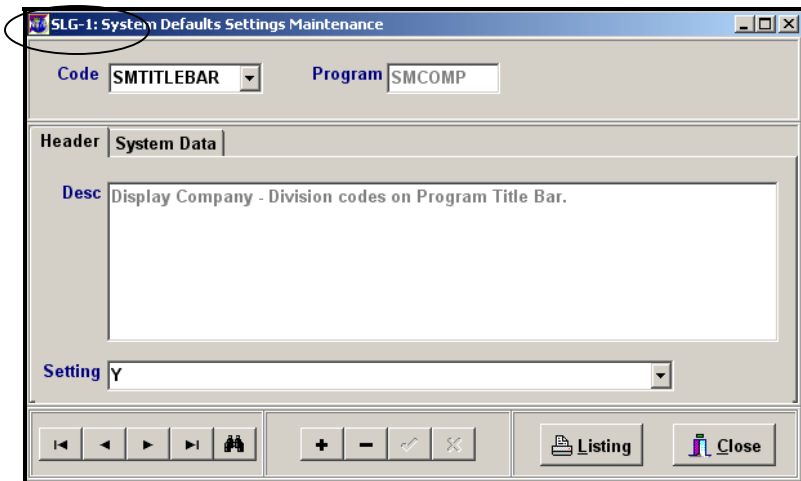


Displaying Company and Division Information in Program Title Bars

A new System Default entitled SMTITLEBAR allows each company and division to determine if the Company and Division codes should appear in the title bar of the program windows. When set to appear, the Company and Division information will appear in every open program title bar. The default setting is 'N' meaning the codes will be hidden from view when a program is opened.



Setting the default to 'Y' causes the Company and Division codes to appear in the upper left of the title bar. The codes that appear are the Company and Division to which the user is logged in.



The SMTITLEBAR System Default can be set up logging into RIMAS NT/P with a User Code that has access to the System Manager module. Settings can be changed in System Defaults Settings Maintenance.

Click any of the ads below to visit Shared Logic's product websites.

