

SLG Support Staff

Perry Jacobs

Executive Vice President
perry@sharedlogic.com

Monte Porter

Sales Manager
monte@sharedlogic.com

Kelly Magginis

Lead Support Technician
kelly@sharedlogic.com

Fran Geoffrion

Software Support Technician
fran@sharedlogic.com

Melissa Koebel

Software Support Technician
melissa@sharedlogic.com

Jason Stewart

Software Support Technician
jason@sharedlogic.com

Craig Swan

Software Support Technician
craig@sharedlogic.com

The Shared Logic Group

6904 Spring Valley Drive
Suite 305
Holland OH 43528
Ph: 877-865-0083
Fax: 419-865-0964

www.sharedlogic.com
Email: info@sharedlogic.com

RIMAS NT/P Feature Spotlight...

April 2011

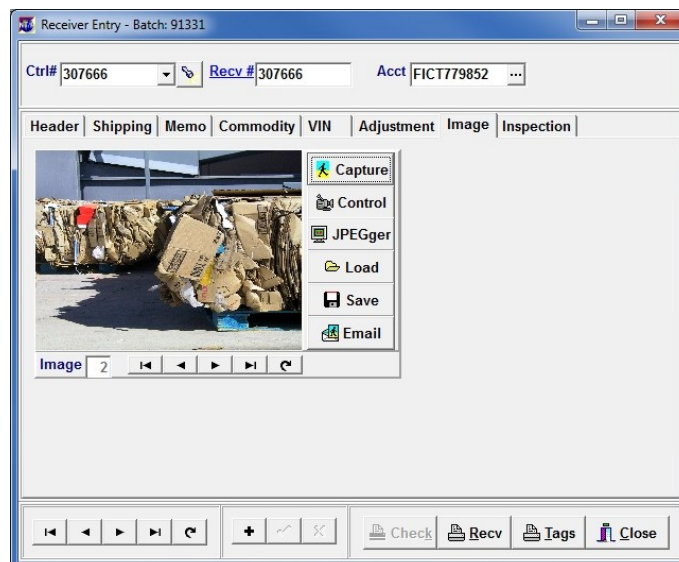
Load, Save, and Email Images

The ability to load, save, and email digital images can be found in the Material Shipping, Material Receiving and Scale Receiving Entry programs in addition to the View History Detail Program in both Purchase and Sale History.

All users with access to these programs are able to Load existing images into the entry program, Save images on a hard drive, and Email images from within each module by using the buttons found on the Image Tab. The Capture and Control features are only available to those using the surveillance camera system.

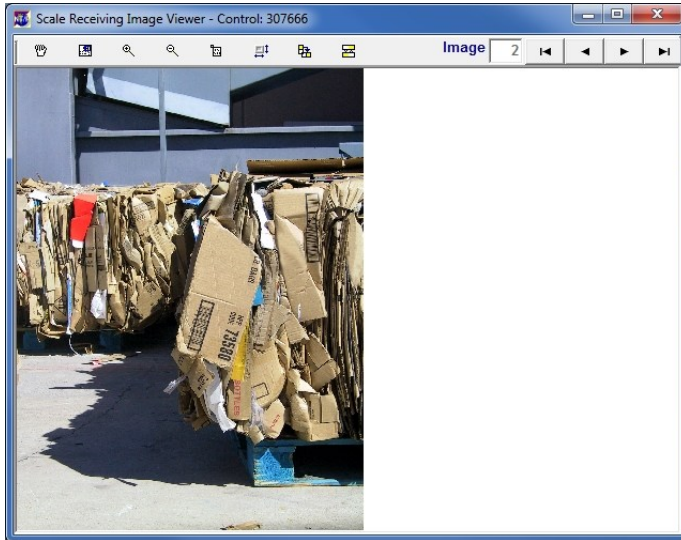
To load an existing digital image, click the Load button and browse for the location of the image. Once located, double-click on the image file to load it. You can also load multiple images by selecting them in the browse window. Once loaded, the image will appear in sequence in the preview pane.

To save an image from the database to a file, click the Save button and browse to the intended location. Type in the name of the file and click Save. The image will be stored at the indicated location.



The image can be emailed by clicking the *Email* button when the image is visible on the Image Tab. Microsoft Outlook must be installed on the computer. The image will attach to an email message.

To allow for better viewing of the image, an Image Viewer has been added. To access this new view, double-click on the image and the image will now be available within the viewer which allows for zooming and rotating options.

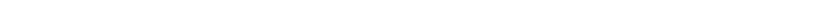


In addition to being useful for documenting inbound loads, these image options are helpful in documenting outbound loads especially those overseas containers.

If you have any questions regarding the use of these features or to request more information about the surveillance camera system contact your Shared Logic Support Technician.



Perry and Monte attended the ISRI Convention 2011 and Expo recently. The expo featured a seminar regarding how to promote the business using social medias. The seminar was so insightful that Shared Logic now has a page on Facebook.



“Like” the Shared Logic Group on Facebook in order to view pictures from the ISRI Convention 2011 as well as stay up to date with the latest product information.

Click any of the ads below to visit Shared Logic’s product websites.

RIMAS e-NT/P
Web Access for Trading Partners

Empower
your Trading Partners.

Enhance
your customer service.

Expand
your business, with e-NT/P.

e-Doc Executive

Document Storage & Retrieval

e-Doc Executive

We have what you're looking for.

Trader Inquiry
Dynamic Access to Company Data

STUDY YOUR DATA.

CONSIDER YOUR OPTIONS.

FORECAST THE RESULTS.

PROCEED WITH CONFIDENCE.

RIMAS MMC

Maintenance Management & Costing for RIMAS NT/P, including:

- * Preventative Maintenance
- * Maintenance Purchase Orders
- * Work Orders
- * Parts Inventory